

**AS35/1000 PIR Roof and Wall Panel**


Cover Width 1000mm

Core Thickness	40*	60	80	100
Overall Depth mm	75	95	115	135
U-Value W/m2K	0.43	0.35	0.25	0.19
Weight 0.5/0.4 Steel	10.10	11.00	11.75	13.00
Weight 0.7/0.4 Steel	11.65	12.55	13.30	14.55



\* 40mm AS35/1000 PIR only available as roof and wall panel to LPS 1181 EXT-B.

**Fire Performance****Wall** (Two hour fire resistance)

AS35/1000  Insulated Panels are tested to LPS 1181 EXT A-15, BS476 Part 22 Fire Resistance, giving 125 minutes integrity and 20 minutes insulation. Panels must be vertically laid, main fix every valley with external stitchers at 300mm ctrs. No Internal stitchers required.

**Roof and Wall**

AS35/1000 PIR Insulated Panels are tested to LPS1181 EXT-B. Panels must be laid vertically, main fix every valley with external stitchers at 450mm ctrs. for roof panels and 300mm ctrs. for wall panels. No internal stitchers are required.

**Air Tightness**

AS35/1000 Insulated Panels side lap joints incorporate a standard factory applied seal which assists in air leakage control and site build quality. Insulation quality and continuity is factory controlled providing no condensation, thermal bridges or moisture risk.

AS35/1000 Insulated Panels combine factory controlled thermal performance with an airtight joint system, to provide specifiers and contractors with confidence and a secure method to meet the new Building Regulations.

**Sustainability**

AS35/1000 Insulated Panels are manufactured using CFC and HCFC Free Technology producing a panel with zero Ozone Depleting Potential offering designers an environmentally responsible product, with a life expectancy of up to 40 years.

**Compatibility**

AS35/1000 Insulated Panels are fully compatible with Steadmans wide range of pre-engineered construction products, purlins, gutters, flashings, rooflights, accessories and fixings.

# AS35/1000

Insulated Roof And Wall Panels



- CFC, HCFC FREE, PIR Core  
Zero Ozone Depletion Potential
- BS EN ISO 9001-2000 Quality approved product.
- Insurer approved. Loss Prevention Certification Board (LPCB) approved roof and wall system.
- Fully complies with Building Regulations Part L2 (England and Wales) and Part J (Scotland)
- Reliability against air leakage.
- Continuity of insulation, no cold bridges, no interstitial condensation.
- Reduced site build time, single component, single fix installation.



**Steadmans**

Manufacturers of Cladding Products for the Construction Industry

A. Steadman & Son Ltd • Warrnell • Welton • Carlisle • CA5 7HH Tel (0169 74) 78277 Fax (0169 74) 78530

# AS35/1000

## Insulated Roof And Wall Panels



- Complies with HSE and CDM requirements.
- Available in a variety of weatherside coatings and colours, including Juniper Green and Slate Blue.
- Non fibrous and unaffected by moisture.
- A wide range of compatible rooflight options.
- 1000mm cover width, suitable for all building applications with a roof slope of 4° or more.
- Suitable for new build and refurbishment. External envelope.
- Life expectancy of up to 40 years with up to 25 years to first maintenance.



Visit us at our website [www.steadmans.co.uk](http://www.steadmans.co.uk)

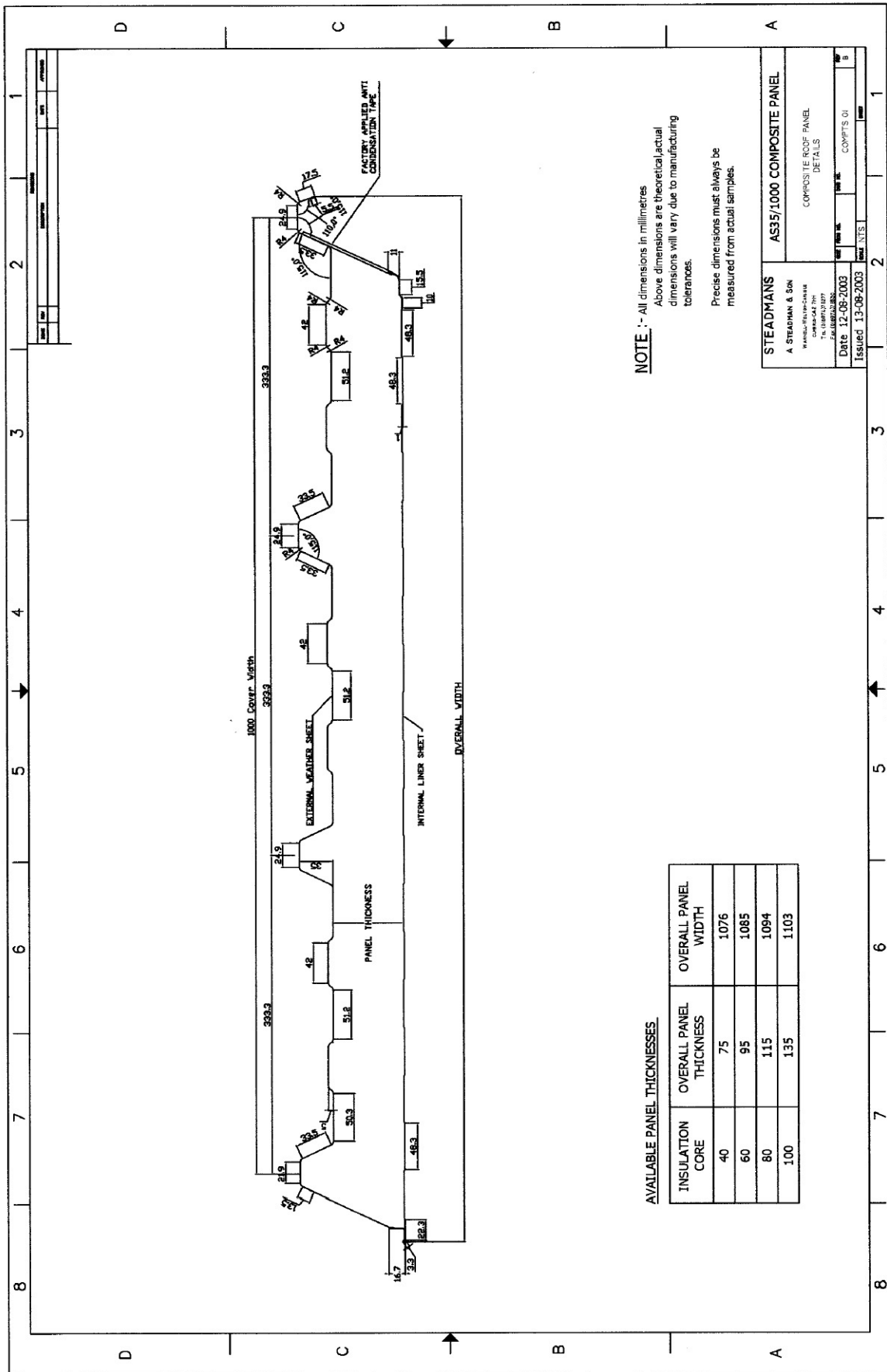
**Sign of Quality**

Irish Depot Tel 028 408 60516 Fax 028 408 60517

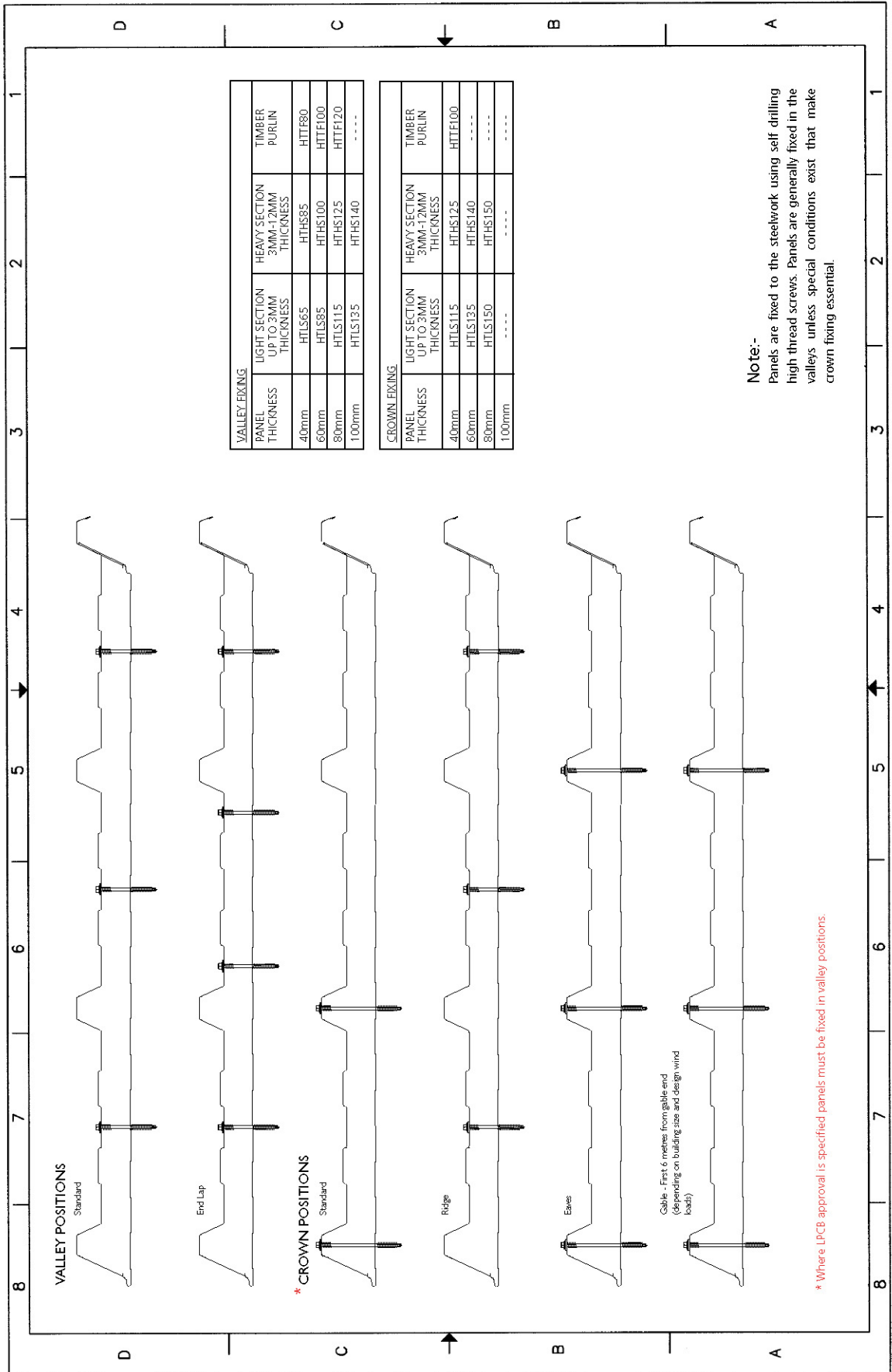
Scottish Depot: Tel 01508 437 753 Fax: 01508 440 716

# AS35/1000

## Insulated Roof And Wall Panels



<b>STEADMANS</b>		<b>AS35/1000 COMPOSITE PANEL</b>	
A STEADMAN & SON		COMPOSITE ROOF PANEL	
WHEELWRIGHT ROAD		DETAILS	
WARRINGTON, CHESHIRE		DATE	
TEL: 01697 71277		12-08-2003	
FAX: 01697 71277		ISSUED	
E: 01697 71277		13-08-2003	
Date 12-08-2003		COMPTS 01	
Issued 13-08-2003		NTS	



\* Where LPCB approval is specified, panels must be fixed in valley positions.

